

78 *f*

87

91

95 $\text{♩} = 150$
Op een onbewoond eiland

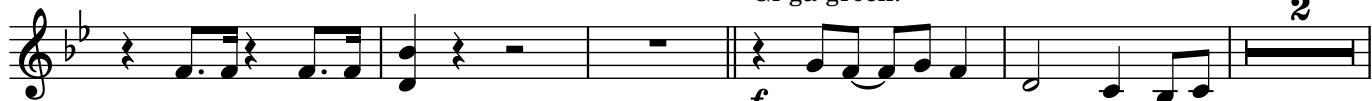
113

121 *mf*

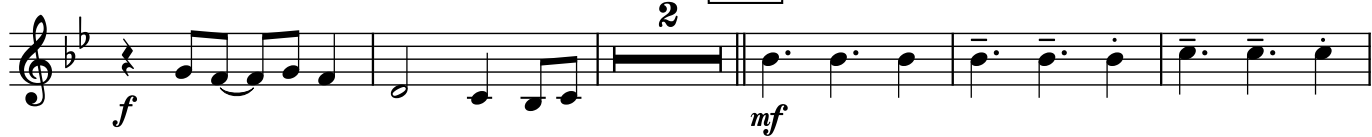
129 7 137 *f*



162 ♩ = 110
Gi-ga-groen!



170



186



193



210



218

226

233 ♩ = 132
Waan-zinnig gedroomd



237



$\text{♩} = 126$
Dabadie Dabadaa
8